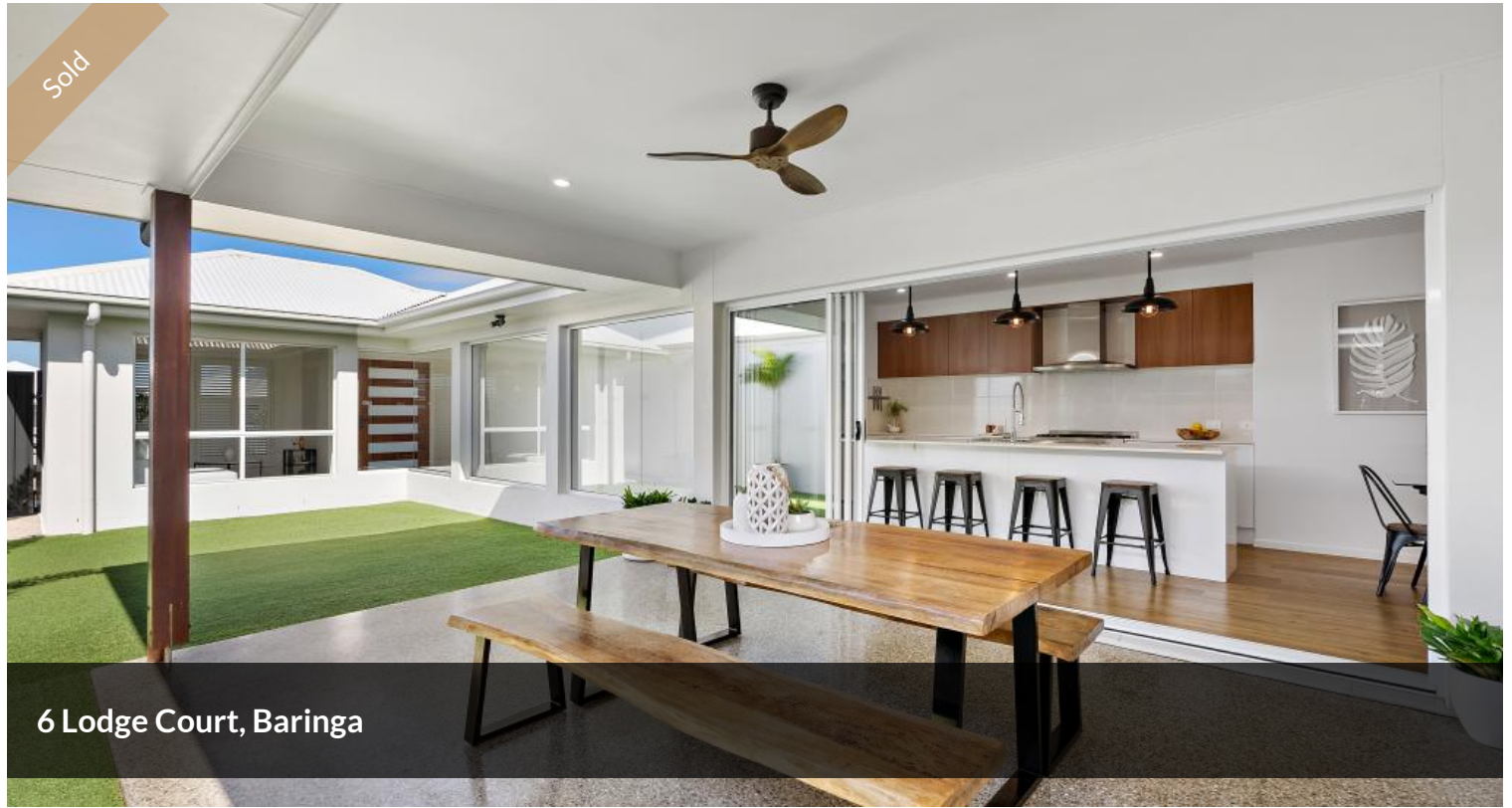


Sold



6 Lodge Court, Baringa



Luxurious Haven in Prime Location!

This uniquely designed, bright and airy, low-maintenance home is easy living at its finest. With nothing to do but move in and enjoy, feel immediately at home and at ease with the quality and calm of this impressive property.

Strategically located –

- Minutes access to Bells Creek Arterial Rd – either South to Brisbane, or North to Sunshine Coast Hospital, Coles and Sunshine Plaza
- Short walk to both Baringa State Primary & Baringa State High Schools
- Moments to Baringa retail village: Cafes, Large Gourmet IGA, Doctors, Pharmacy, Two Bottle shops & Tavern
- Short walk to bus stops & McDonalds & soon to be built Shopping Plaza Precinct

Features:

- Beautifully appointed chef's kitchen with abundant storage, butler's pantry and large stone bench-tops
- Alfresco dining located off the kitchen flowing to the sun-drenched courtyard - a true entertainer's delight
- The dazzling private courtyard is a slice of paradise with feature timber fan, sealed terrazzo flooring, and lush green low maintenance (artificial grass) lawn

🏠 3 🚗 2 🚲 2 📏 387 m2

Price SOLD for \$980,000

Property Type Residential

Land Area 387 m2

Floor Area 207 m2

Agent Details

Richard Jones - 0459 433 173

Megan Vella - 0459 578 575

Office Details

Jackson Jones

0497 338 395



JACKSON JONES

to complete the picture

- Stunning open-plan formal lounge to the rear of alfresco dining
- Second separate lounge and/or study area
- Master suite with direct access to the alfresco courtyard, also benefiting from a spacious walk-in robe and modern ensuite with double vanity, stylish shower, quality taps and hardware and luxurious double rainfall showers
- All bedrooms benefit from large windows and natural light - Bedrooms two and three are well-positioned with built in robes and easy access to main bathroom.
- Large glass stacker doors add to the WOW factor for seamless indoor/outdoor connection
- Separate laundry with direct access outside.
- Wood effect flooring, neutral-toned interiors and high square-set ceilings create a welcoming ambiance
- Pool piercing in the slab makes this residence pool-ready!
- Fully landscaped front and back with stone and sealed pavers, raised garden beds and a gated area for a dog or easily removed
- Double lock up garage with epoxy resin flooring and built-in storage (two cupboards)
- Split system air conditioning
- 5000L water tank - NuTrend Home (built 2018)
- Two separate outdoor entertainment spaces
- Spacious side area for vegetables/fruit trees
- Set on a generously sized on 387 sqm

Don't miss the opportunity!

The above information provided has been furnished to us by the vendor/s. We have not verified whether or not that information is accurate and do not have any belief in one way or the other in its accuracy. We do not accept any responsibility to any person for its accuracy and do no more than pass it on. All interested parties should make and rely upon their own inquiries in order to determine whether or not this information is in fact accurate.